

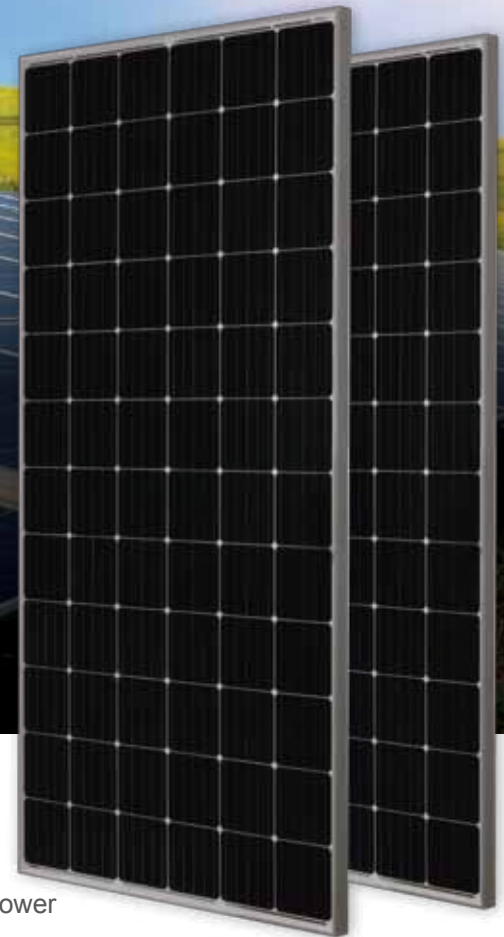


## 395W PERC Module

JAM72S09 375-395/PR Series

### Introduction

Powered by high-efficiency PERCIUM cells, this series of high-performance modules provides the most cost-effective solution for lowering the LCOE of any PV systems large or small.



5 busbar solar cell design



Higher output power



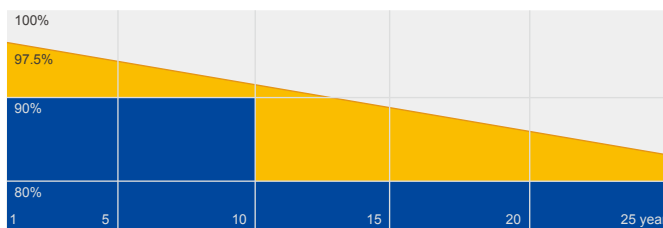
Excellent low-light performance



Lower temperature coefficient

### Superior Warranty

- 12-year product warranty
- 25-year linear power output warranty



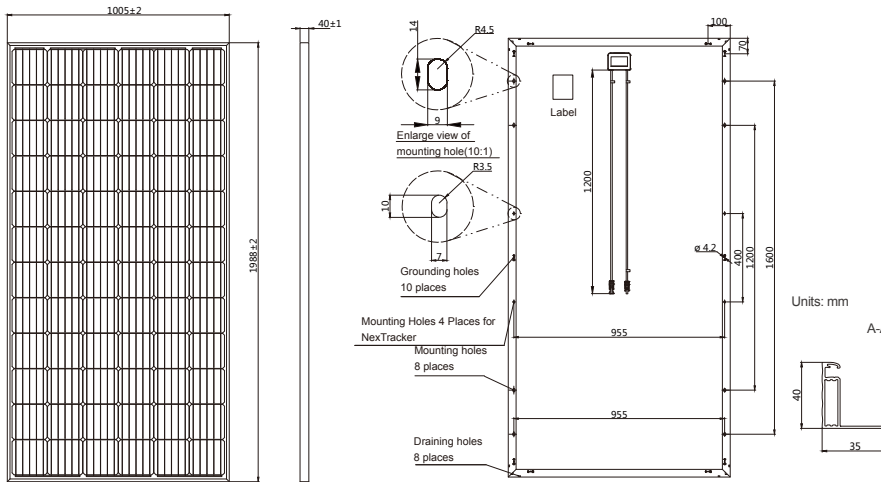
■ JA Linear Power Warranty ■ Industry Warranty

### Comprehensive Certificates

- IEC 61215, IEC 61730, UL 1703
- ISO 9001: 2015 Quality management systems
- ISO 14001: 2015 Environmental management systems
- OHSAS 18001: 2007 Occupational health and safety management systems
- IEC TS 62941: 2016 Terrestrial photovoltaic (PV) modules – Guidelines for increased confidence in PV module design qualification and type approval



MECHANICAL DIAGRAMS



SPECIFICATIONS

|                          |                          |
|--------------------------|--------------------------|
| Cell                     | Mono                     |
| Weight                   | 22.6kg±3%                |
| Dimensions               | 1988±2mm×1005±2mm×40±1mm |
| Cable Cross Section Size | 4mm <sup>2</sup> (12AWG) |
| No. of cells             | 72(6x12)                 |
| Junction Box             | IP67, 3 diodes           |
| Connector                | QC 4.10-35               |
| Packaging Configuration  | 27 Per Pallet            |

Remark: customized frame color and cable length available upon request

ELECTRICAL PARAMETERS AT STC

| TYPE                                               | JAM72S09<br>-375/PR                                             | JAM72S09<br>-380/PR | JAM72S09<br>-385/PR | JAM72S09<br>-390/PR | JAM72S09<br>-395/PR |
|----------------------------------------------------|-----------------------------------------------------------------|---------------------|---------------------|---------------------|---------------------|
| Rated Maximum Power(Pmax) [W]                      | 375                                                             | 380                 | 385                 | 390                 | 395                 |
| Open Circuit Voltage(Voc) [V]                      | 48.47                                                           | 48.75               | 49.04               | 49.35               | 49.64               |
| Maximum Power Voltage(Vmp) [V]                     | 39.27                                                           | 39.59               | 39.90               | 40.21               | 40.48               |
| Short Circuit Current(Isc) [A]                     | 10.06                                                           | 10.12               | 10.17               | 10.22               | 10.27               |
| Maximum Power Current(Imp) [A]                     | 9.55                                                            | 9.60                | 9.65                | 9.70                | 9.76                |
| Module Efficiency [%]                              | 18.8                                                            | 19.0                | 19.3                | 19.5                | 19.8                |
| Power Tolerance                                    | 0~+5W                                                           |                     |                     |                     |                     |
| Temperature Coefficient of Isc(α <sub>Isc</sub> )  | +0.060%/°C                                                      |                     |                     |                     |                     |
| Temperature Coefficient of Voc(β <sub>Voc</sub> )  | -0.300%/°C                                                      |                     |                     |                     |                     |
| Temperature Coefficient of Pmax(γ <sub>Pmp</sub> ) | -0.370%/°C                                                      |                     |                     |                     |                     |
| STC                                                | Irradiance 1000W/m <sup>2</sup> , cell temperature 25°C, AM1.5G |                     |                     |                     |                     |

Remark: Electrical data in this catalog do not refer to a single module and they are not part of the offer. They only serve for comparison among different module types.  
\*For NexTracker installations static loading performance: front load measures 2400Pa, while back load measures 2400Pa.

ELECTRICAL PARAMETERS AT NOCT

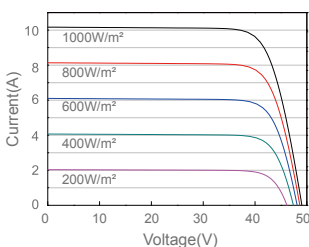
| TYPE                           | JAM72S09<br>-375/PR                                                                   | JAM72S09<br>-380/PR | JAM72S09<br>-385/PR | JAM72S09<br>-390/PR | JAM72S09<br>-395/PR |
|--------------------------------|---------------------------------------------------------------------------------------|---------------------|---------------------|---------------------|---------------------|
| Rated Max Power(Pmax) [W]      | 278                                                                                   | 281                 | 285                 | 289                 | 292                 |
| Open Circuit Voltage(Voc) [V]  | 45.86                                                                                 | 46.15               | 46.47               | 46.78               | 47.09               |
| Max Power Voltage(Vmp) [V]     | 37.05                                                                                 | 37.34               | 37.64               | 37.92               | 38.21               |
| Short Circuit Current(Isc) [A] | 7.95                                                                                  | 7.99                | 8.03                | 8.07                | 8.11                |
| Max Power Current(Imp) [A]     | 7.49                                                                                  | 7.53                | 7.57                | 7.61                | 7.65                |
| NOCT                           | Irradiance 800W/m <sup>2</sup> , ambient temperature 20°C,<br>wind speed 1m/s, AM1.5G |                     |                     |                     |                     |

OPERATING CONDITIONS

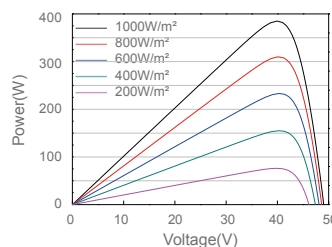
|                            |                                 |
|----------------------------|---------------------------------|
| Maximum System Voltage     | 1000V/1500V DC(UL)              |
| Operating Temperature      | -40°C~+85°C                     |
| Maximum Series Fuse        | 20A                             |
| Maximum Static Load,Front* | 5400Pa(112 lb/ft <sup>2</sup> ) |
| Maximum Static Load,Back*  | 2400Pa(50 lb/ft <sup>2</sup> )  |
| NOCT                       | 45±2°C                          |
| Fire Performance           | Type 1                          |

CHARACTERISTICS

Current-Voltage Curve JAM72S09-385/PR



Power-Voltage Curve JAM72S09-385/PR



Current-Voltage Curve JAM72S09-385/PR

